

MODULAR FACEPLATES

- Available in 1-, 2-, 3-, 4-, 6- or 12-ports for a variety of configurations and future expansion
- All faceplates are constructed from flame-retardant UL94V-O rated material
- Regal modular snap-in jacks are designed to fit this series of faceplates

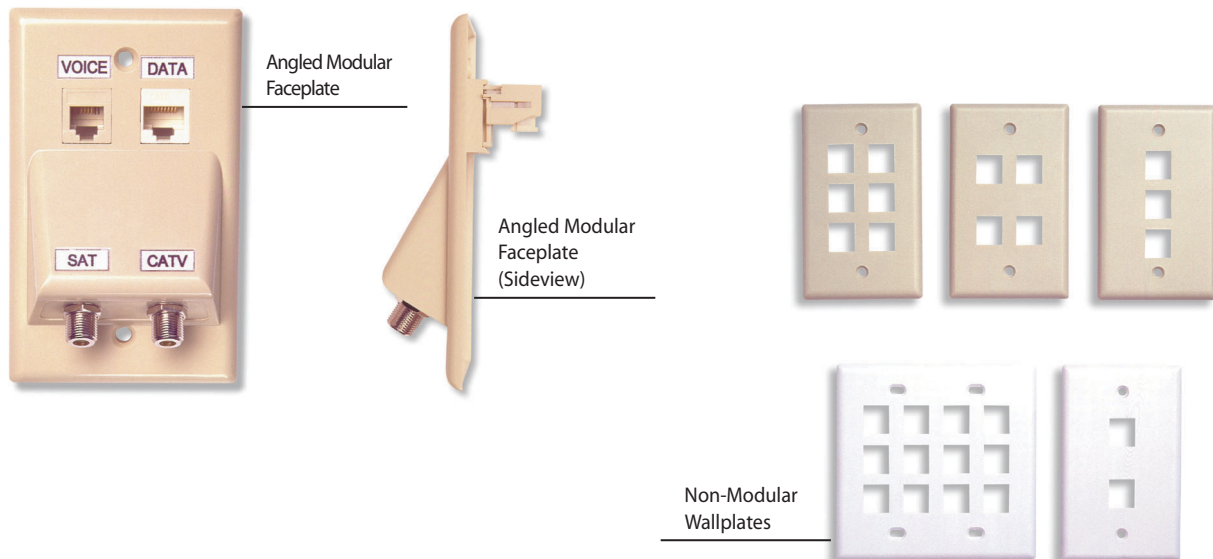
ANGLED MODULAR FACEPLATES

- Angled wallplates provide better external protection than traditional faceplates by helping maintain the proper bend radius for category 5 fiber patch cords and RG-6 drop cable
- Includes one or two F-81s fixed into wallplate
- Regal modular snap-in jacks are designed to fit the modular top portion of the angled wallplate
- Works well with category 5 jacks, category 3 jacks, F-81s and other combinations
- Available in a variety of configurations

ORDERING INFORMATION

Modular Faceplates (1-, 2-, 3-, 4-, 6- or 12-Ports)	White	Ivory
	Part #	Part #
Simplex	213585	213720
Duplex	213722	213721
Triplex	213723	213724
Quadplex	213725	213726
Sixplex	213727	213728
Twelveplex	213729	213730

Angled Modular Wallplate	
214014	White 2 Blanks and 1 F81
214015	White 2 Blanks and 2 F81s
214024	Ivory 2 Blanks and 1 F81
214025	Ivory 2 Blanks and 2 F81s



NON-MODULAR WALLPLATES

- Flush mount non-modular wallplate with F-81 coaxial connector and 6 position/4 conductor RJ-11 voice jack
- Flush mount non-modular wallplate with one RJ-11 voice jack
- 1-port surface mount box with RJ-11 voice jack
- 2-port surface mount box with RJ-11 voice jack
- Flush mount non-modular wallplate with two RJ-11 jacks
- Contacts on all RJ-11 and RJ-45 jacks and connectors are coated with 50 micro-inches of gold over 100 micro-inches of nickel, providing premium performance, reliability and longevity

ORDERING INFORMATION

Non-Modular Wallplates	White	Ivory
	Part #	Part #
Flush Mount with F-81 Coaxial Connector and 6 Position/4 Conductor RJ-11 Voice Jack	213848	213849
Flush Mount with 1 RJ-11 Voice Jack	213836	213837
Flush Mount with 2 RJ-11 Jacks	213838	213839
1-Port Surface Mount Box with RJ-11 Voice Jack	214090	214091
Dual Surface with 2 RJ-11 Voice Jacks	702565	702566



MODULAR RJ-45 SNAP-IN JACKS (CAT 5)

- Designed for high-speed networking applications (up to 622 Mbps)
- High density, 8 position/8 conductor modules
- Designed to meet category 5 requirements Meets FCC Part 68 U.L.® Listed Rated UL94V-0
- Jack contacts are 50 micro-inches of gold over 100 micro-inches of nickel, providing premium contact reliability and longevity
- Available in seven colors: white, ivory, orange, blue, red, yellow and almond

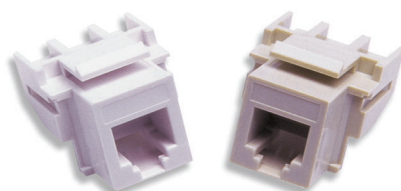
MODULAR RJ-11 VOICE GRADE SNAP-IN JACKS (CAT 3)

- Category 3, 6 position/6 conductor modular snap-in jacks are designed for voice and data applications
- Meets FCC Part 68 U.L.® Listed Rated UL94V-0
- Jack contacts are 50 micro-inches of gold over 100 micro-inches of nickel providing premium contact reliability and longevity
- Available in seven colors: white, ivory, orange, blue, red, yellow and almond

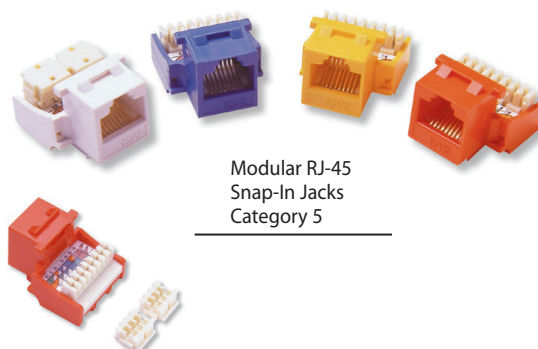
ORDERING INFORMATION

Modular RJ-45 Snap-In Jacks (Category 5)	Part #
White	213571
Ivory	213572
Orange	213573
Blue	213574
Red	213575
Yellow	213576
Almond	213577

Modular RJ-11 Voice Grade Snap-In Jacks (Category 3)	Part #
White	213578
Ivory	213579
Orange	213580
Blue	213581
Red	213582
Yellow	213583
Almond	213584



Modular RJ-11 Voice Grade Snap-In Jacks Category 3



Modular RJ-45 Snap-In Jacks Category 5

BLANK INSERTS

Snap-in blank inserts are used to fill unused positions in modular faceplates

- Available in white and ivory

F-81 FLUSH MODULES

- Insert with a threaded F-81
- F-81 is flush with the surface of the modular wallplate

F-81 INSERTS

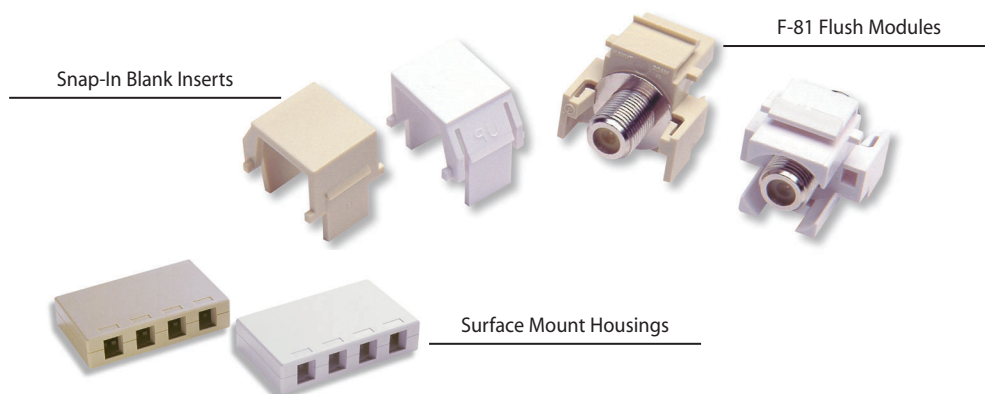
- Snap-in insert with threaded, non-flush F-81 pass-through insert
- Available in white and ivory

SURFACE MOUNT HOUSINGS

- Available in 1-port, 2-port or 4-port configurations
- Includes adhesive backs
- Constructed of high-impact, self-extinguishing plastic, rated UL94V-O

ORDERING INFORMATION

Blank Inserts	White	Ivory
	Part #	Part #
Snap-In Blank Inserts	213731	213732
F-81 Flush Modules		
Threaded F-81	213733	213734
F-81 Insert (Not Pictured)		
Threaded, Non-Flush F-81	213649	213648
Surface Mount Housings		
1-Port	213735	213736
2-Port	213737	213738
4-Port	213739	213740



CATEGORY 5 PATCH CORDS

- Designed for high-speed transmission 8 position/ 8 conductor connectors
- Jack contacts are 50 micro-inches of gold over 100 micro-inches of nickel, providing premium contact reliability and longevity
- Stranded 24 AWG cordage for use in work stations, equipment cords and other cross-connect applications

RJ-11 PHONE CORDS

- RJ-11 Phone Cord Jumpers
 - Flat, 4 conductor cordage.
 - Jack contacts are 50 microns of gold plating, providing premium contact reliability and longevity
- RJ-11 Silver Satin Wire
 - Flat, 4 conductor cordage.
 - Available in 1,000 ft. reels (no connectors)

ORDERING INFORMATION

Category 5, RJ-45 Patch Cords

Contact Your ARRIS Sales Representative for Part Numbers

Available in Yellow, Blue, Red, Green, Ivory, Gray and Black

Available Lengths: 1 ft., 3 ft., 5 ft., 7 ft., 10 ft., 14 ft., 20 ft., and 25 ft.

RJ-11 Phone Cord	Silver Part #	Beige Part #
RJ-11 Jumpers		
7 ft.	213840	214161
14 ft.	213841	214162
25 ft.	213842	214163
RJ-11 Jumpers		
1000 ft.	214067	
RJ-11 Plugs		
RJ-11 Plug	700100	
RJ-45 Plug	700101	



RJ-11 Phone Cords

Category 5 RJ-45 Patch Cords



WIRE DISTRIBUTION SPOOLS

- High-impact plastic spools with captive #10 wood screw
- Neatly guides cable or jumper wires for cable management

WIRE

- Category 3 Wire
 - Two and four pair, category 3 wire is available in 22 or 24 AWG
- Category 5 Wire
 - Category 5 UTP cable is designed to meet your current and future networking applications
- Provides excellent crosstalk and attenuation characteristics

ORDERING INFORMATION

Wire Distribution Spools	Part #
White Spool w/#10 Screw	213921
Category 3 Wire (2 Pair)	
2 pr 22 AWG Beige	213830
2 pr 22 AWG Gray	213831
2 pr 24 AWG Gray	213828
2 pr 24 AWG Beige	213829
Category 3 Wire	
4 pr 24 AWG Gray	214429
4 pr 24 AWG Beige	700103
4 pr 24 AWG White	700743
6 pr 24 AWG Gray	703723
12 pr 24 AWG Gray	700614
25 pr 24 AWG Gray	702679
50 pr 24 AWG Gray	702678
Category 5 Wire (4 Pair)	
4 pr 24 AWG Gray	213832
4 pr 24 AWG Beige	700113
4 pr 24 AWG Blue	703376
4 pr 24 AWG White	703214
6 pr 24 AWG Gray	700367
6 pr 24 AWG Beige	700368
8 pr 24 AWG Gray	703722
8 pr 24 AWG Beige	700370
12 pr 24 AWG Gray	702003
25 pr 24 AWG Gray	703370



Category 3 and 5 Wire



Wire Distribution Spool

USB ETHERNET

- Allows connection of any USB-configured computer to a cable modem quickly and easily
- “Plug-and-play” installation method eliminates need to open computer and install network interface card
- Auto-install setup program simplifies device installation process and eliminates need to install additional driver software
- Manufactured with the CATC chip which offers unparalleled performance to the Kawasaki chip
- Windows® 98 compatible
- Supports all Ethernet applications and common network protocols including: TCP/IP, IPX/SPX, NetBEUI
- Up to 5.7 Mbps throughput
- Fully USB compliant, and meets all IEEE Ethernet standards
- Powered directly by Universal Serial Bus, no need for an external power source
- Includes six-foot USB device cable CE, FCC class A and B approved

SPECIFICATIONS

Window System Requirements

IBM Compatible PC with 486/66 or Higher Processor — Windows®98 or Window®95 (OSR2.1)
 Minimum 16 MB RAM, 30 MB of Available Hard Disk Space
 USB Port or USB PCI Card

Standard

Universal Serial Bus Specification, Rev. 1.1, OHCI and UHCI Compliant, IEEE802.3

Connectors

(1) USB Series Receptacle — (1) RJ-45 10 Base-T

Speed

Up to 5.7 Mbps Throughput

Protocols

TCP/IP, IPX/SPX, NetBEUI

Power

Bus Powered

Cable

Six Foot USB Device Cable

Compliance

FCC Class A & B, CE

Operating Temperature

32 to 104 °F (0 to 40 °C)

Operating Humidity

0 to 95% RH (Non-Condensing)

ORDERING INFORMATION

USB Ethernet Adapter

Ethernet Adapter

Part #

214483



Specifications are subject to change without notice.

MODULAR TOOL

- Used for RJ-45 and RJ-11 installations
- All-in-one tool: cuts, strips and connects
- Carbon steel construction
- Ratchet mechanism
- Audio/Video Jumpers
- 2-Way Audio Patch Cords
- Cords are protected with black PVC jackets
- Tips are color-coded
- Available in 6 ft. and 12 ft. standard lengths

3-WAY AUDIO/VIDEO JUMPERS

- RG-59 video cable includes RCA connectors
- Cords are protected with black PVC jackets
- Tips are color-coded
- Available in 6 ft. and 12 ft. standard lengths

ADAPTERS

- Two female to one male adapters
- Patch Panels
- Designed for high-speed, category 5 applications
- Supports 100 MHz cross-connect transmission for UTP cabling systems using category 5 rated cable
- Exceeds category 5 requirements
- Identification strips
- Printed circuit board technology
- Available in 12-port, 24-port, 48-port

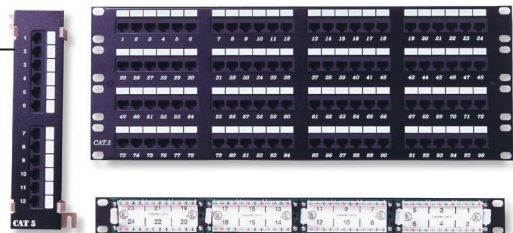
ORDERING INFORMATION

RJ-45 and RJ-11	213833
Audio/Video Jumpers	
6 ft. Dual	214030
12 ft. Dual	214386
6 ft. Triple	214031
12 ft. Triple	214387
Patch Panels	
12-Port	214068
24-Port	214061
48-Port	213918
96 Port	214062



Audio/Video Jumpers

Patch Panels



Modular Tool

TELPAK
APPLICATION

The TelPak provides all the basic tools and test items needed for a successful Voice Port NIU installation. These products are the perfect complement for installation of premise wiring and wiring terminations. In addition, the rugged carrying bag is convenient for tool storage and retrieval.

SPECIFICATIONS

TelPak

Voice Port Provisioning Functions

Mounting and Testing Equipment

Screwdrivers (Flat, Phillips, Nut, Security), Level, Stud Sensor

Cable Installation Equipment

Twisted Pair Preparation, Coax Preparation, Coaxial Connector Compression, Torque Wrench (20 in/lbs.)

Horizontal Wiring

Cutters, Jacket Remover, Strippers

RJ-11, RJ-45, Scotchlok® Crimpers

Punch Down Tool w/66, 110 Blades

Toner and Probe Kit, Probe Pic

Banjo, Digital VOM

Industrial Flashlight

Measuring Tape

18" Wood and Masonry Drill Bits

Tool Bag

Convenient to Carry, Rugged Fabric

Wide Zippered Top Opening for Quick Access and Security

Extra Inside Space for Additional Equipment

Outer Pockets for Fast Tool Access

Top Handles and Shoulder Strap

D-Ring for Butt Set

9" x 16" Sturdy Flat Bottom

ORDERING INFORMATION

Description	Part #
TelPak Tool Kit	702500



Specifications are subject to change without notice.