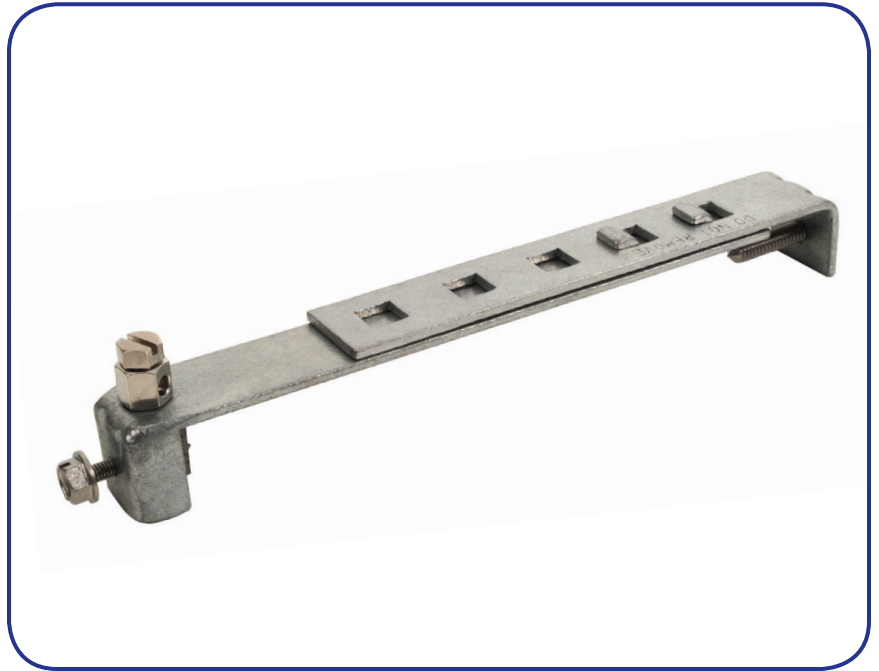




## Allied Bolt

### Meter Box Bracket Clamp



#### Features

- Clamp and studs are designed to penetrate most surface conditions including painted, galvanized and corroded surfaces
- Both stainless and galvanized models use stainless steel mounting studs and ground screws
- Patented stainless steel studs accommodate ground wires from #14 to #6 AWG
- Mechanically galvanized to meet ASTM Specification B695 Class 50
- Will not interfere with meter box front cover
- Rivet pin design provides easy size adjustment
- Brackets are designed to accept ground wire ranging from #14 SOL to #6 SOL AWG
- Lightning surge tested and approved. Clamp passes 1,500 amps of current for 6 seconds
- UL® Listed file #212223
- Bracket hardware exceeds UL torque requirement of 35 inch pounds
- Sold individually or in packages

#### Application

Bracket Style Meter Box Clamps are used to permanently attach a ground wire to the outer shell of the meter box creating a bond to the common utility ground at the customer's premise. Meter Box Connectors are suitable for grounding applications in telephone, cable, and satellite television. Meter Box Connectors are compliant with the practices outlined in Articles 800, 810, 820 and Section 250.94 of the NEC.

#### Additional Features

- Bracket style bonding clamps are manufactured in two adjustable sizes to fit a large array of box sizes: short bracket fits boxes ranging from 7" to 10-1/4"; long bracket fits boxes ranging from 11-1/2" to 14-1/2"
- Mating hooks and square holes on steel bracket allow halves to be assembled without shearing or breaking when tightened. Competitive products use rivets that may loosen or pop out over time
- Bracket's penetrating block has machined cutting tips that can pierce through hard finishes (ie; powder coating, paint) found on meter boxes to form a metal to metal bond
- Ground Wire attachment stud with mating screw securely fastens ground wire to the clamp. Competing products require the ground wire to be formed inside a wire washer causing inconsistent connections
- Ground wire attachment stud is directly connected to the penetrating block. This means that the ground wire connection is located closer to the meter box grounding connection than any other competitive meter box clamp
- Connectors are stamped with the Corresponding UL® Listing number, and the minimum and maximum wire size accepted (NEC requirement)
- Mating screw of ground wire attachment stud has a flat point to prevent scoring the ground wire
- Bracket hardware is compatible with a 7/16" - 3/8" can wrench

## Placement

Bracket Style Bonding Clamps are designed to attach on the outside of a meter box. The brackets are manufactured in two adjustable lengths to accommodate a variety of meter box sizes. The ends of the bracket firmly grip the box and penetrate the finish to form a metal to metal bond. Brackets may mount on any two opposing sides of the meter box. Installed Brackets do not interfere with opening and closing the meter box.

## Material Specifications

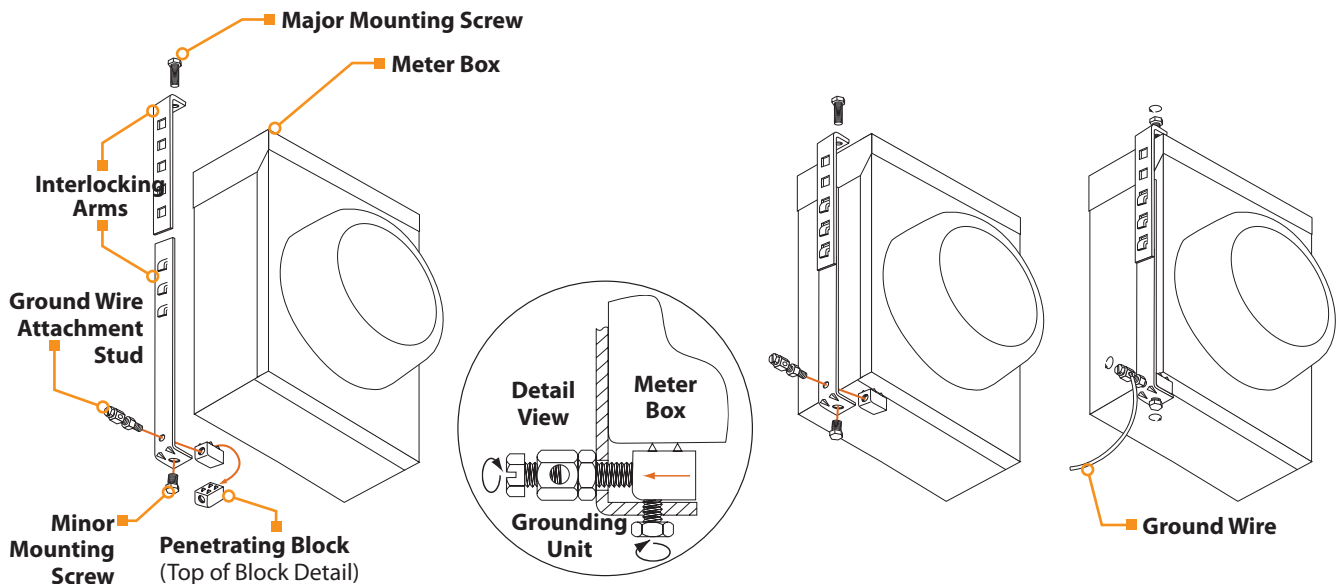
- The Clamp's two interlocking arms are formed from 1/8" thick AISI 1010 Steel. They are mechanically galvanized to conform with ASTM specifications B695, Class 50 Type 1
- Mounting screws (minor and major) are formed from 304 Stainless Steel
- Penetrating block used to cut through the meter box finish is machined from 304 Stainless Steel
- Ground wire attachment stud and mating ground screw are machined from #270 Brass Alloy and nickel plated to prevent dissimilar metal contact

## Packaging

Brackets are packaged in individual bags with 10 brackets in a carton and 50 brackets in a box. Installation instructions are printed on each bag.

## Installation

1. Place the bracket style meter box clamp on the top, sides, or bottom of the meter box frame. Adjust the two bracket halves to the closest setting that fits on meter box.
2. On the non-ground attachment side, tighten the major mounting screw.
3. Tighten the ground wire attachment stud. This will cause the pyramid points on the penetrating block to scrape the finish off the meter box resulting in metal to metal contact between the connector and meter box.
4. Tighten the minor mounting screw located under the Penetrating Block.
5. Strip 1" of jacket from the ground wire.
6. Attach "Ground Wire Warning Tag".
7. Insert ground wire in the hole on the ground wire attachment stud, bend back around hex, and tighten mating screw.



# Meter Box Bracket Clamp

## Ordering Information

ARRIS #	Mfg #	Description	Size	Carton Qty	Box Qty
212223	3305	Short Bracket Style Meter Box Clamp	7" - 10¼"	10	50
212222	3306	Long Bracket Style Meter Box Clamp	11½" - 14½"	10	50

## Accessories

ARRIS #	Mfg #	Description	Std Pkg
211884	38716	Can/ Terminal Wrench; 3/8" and 7/16" Hex Socket	1

Manufactured in the United States.

The capabilities, system requirements and/or compatibility with third-party products described herein are subject to change without notice. ARRIS, the ARRIS logo, Auspice®, C3™, C4®, C4c™, Cadant®, C-COR®, CHP Max®, ConvergeMedia™, Cornerstone®, CXM™, D5™, Digicon®, Flex Max®, Keystone™, MONARCH®, n5™, nABLE™, nVision®, OpsLogic®, OpsLogic® Service Visibility Portal™, PLEXIS®, PowerSense™, Regal®, ServAssure™, Service Visibility Portal™, TeleWire Supply®, TLX®, Touchstone®, VoiceAssure™, VSM™, and WorkAssure™ are all trademarks of ARRIS Group, Inc. Other trademarks and trade names may be used in this document to refer to either the entities claiming the marks and the names of their products. ARRIS disclaims proprietary interest in the marks and names of others. © Copyright 2009 ARRIS Group, Inc. All rights reserved. Reproduction in any manner whatsoever without the express written permission of ARRIS Group, Inc. is strictly forbidden. For more information, contact ARRIS.

